

# HOW TO ORDER OUTLOOK RIPPLE-FOLD OR PINCH PLEAT

Step By Step Guide

## 1 Select Finish



## 2 Select Finial Or End Cap



## 3 Select The Pole Size



## 4 Select The Connector & The Connector Ring (if required)



## 5 Select The Brackets



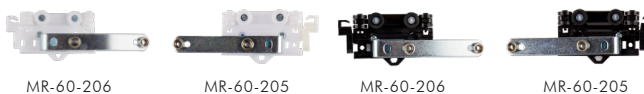
## 6 Select The Components

### A Ripple-Fold

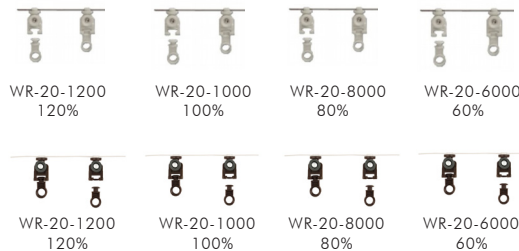
For butt master carrier



For over / underlap carrier



### B Wheeled Ripple-Fold Carrier (Choose Fullness)



### D End Stop



### C Snap Tape



### E Pinch Pleat For over / underlap carrier



### F Pinch Pleat



### G End Stop



## 7 Select The Draw Wand



**OUTLOOK**



HARDWARE  
RIPPLE-FOLD 36

## What you need to create this look:

### DRAPERY HARDWARE RIPPLE-FOLD

1 - Select finish:



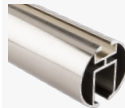
satin silver

2- Finial or End cap (sold in pairs)



28EC

3- Pole (select pole length)



28CP

4- Brackets



35CB11

5- Master Carriers



BM-80-804  
WHITE



BM-80-803  
WHITE

6- Ripple fold carriers



WR-20-1200

7- Snap Tape



WHITE  
RF-40-2845

8- End Stop



MES-1000

Refer to OUTLOOK catalogue for additional options.



HARDWARE  
PINCH PLEAT 38

## What you need to create this look:

### DRAPERY HARDWARE PINCH PLEAT

1 - Select finish:



2- Finial or End cap (sold in pairs)



3- Pole (select pole length)



4- Brackets



6- Glides



7- End Stop



Refer to OUTLOOK catalogue for additional options.



## What you need to create this look:

### DRAPERY HARDWARE CONVENTIONAL

1 - Select finish:



2- Finial or End cap (sold in pairs)



3- Pole (select pole length)



4- Brackets



5- Rings



Refer to OUTLOOK catalogue for additional options.