

alendel[®]
interior inspiration

INTRODUCING THE
SPRING/SUMMER 2022
COLLECTIONS



HARVEST LINEN

The Harvest Linen collection hosts 43 colors.

Light, airy neutrals gently give way to softly colored mid-tones and deep, rich, saturated shades. Revel in the palette, play with color and pair Harvest Linen with beautiful prints and complementary textures.

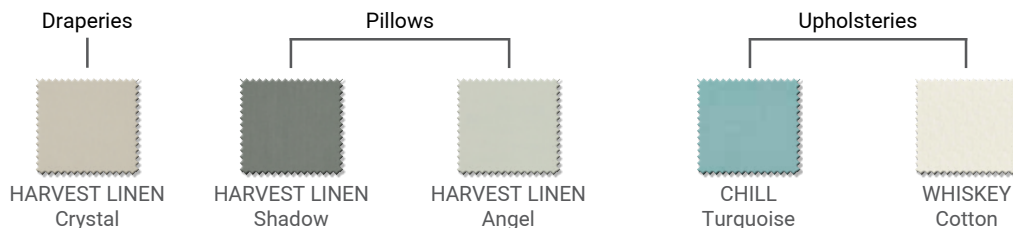


LINEN IS RICH IN HISTORY AND HAS MANY SURPRISING PROPERTIES.

- Linen is a sustainable fabric made from flax fibers.
- Cultivate for over 6,000 years and in almost every country in the world.
- Linen textiles are two to three times stronger than cotton.
- Linen is a porous fiber that contributes to its natural heat and moisture-wicking properties.
- Linen is naturally anti-bacterial.
- Linen has little elasticity, resulting in the classic “linen wrinkle



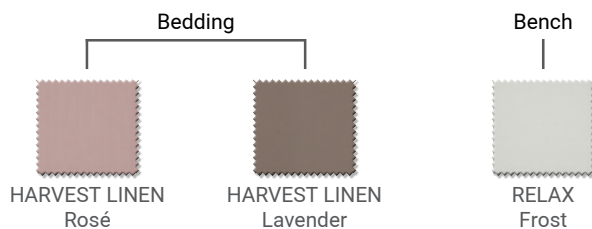
ROOM SET 1
Living room



HARVEST LINEN DESCRIPTION

- 100% Linen
- 54"
- 15,000 DR
- NFPA 260/UFAC Class 1 (UFAC), CAL 117/SE
- Pilling Class 3
- S – Dry Clean
- Country of Origin Korea
- Available in 43 colors

Harvest Linen is timeless, versatile and sustainable. A beautiful option for window coverings, bedding, and decorative pillows and accessories.



HARVEST LINEN, More room ideas

Mix and Match from the collection "Harvest Linen" for all your drapery and upholstery needs. The collection "Harvest Linen" in "Crystal", "Spa", "Tropic", and "Honey" is perfect for your drapery.

From the collection "Relax" in the pattern "Barley" makes the perfect match for all your upholstery needs. Give these collections a try, and we guarantee your satisfaction.



ROOM SET 3
Showroom

Drapes & Pillows



HARVEST LINEN
Crystal



HARVEST LINEN
Spa



HARVEST LINEN
Tropic



HARVEST LINEN
Honey

Upholsteries



RELAX
Barley

An eye-catching print is a breath of fresh air, the foundation of a space, and a starting point for wall color, furniture stains, rugs, and so on.

This essential print sourcebook is a compilation of various design styles and base fabrics. Twelve patterns range from vintage classic, comfortable transitional, to bold contemporary.

Subtle neutrals, stone, grays and rich browns are timeless. Blues are calm and soothing, and bold deep palettes are strong but not bright.

Here are LEXINGTON in 12 different swatches:

SULLIVAN is an inspired geometric hand block print.



MELROSE is a vintage watercolor tonal damask.



BEEKMAN is a "hand-painted" multi-colored floral bouquet.



SOMERSET is an "aged" two-colored stamped damask on natural grounds.



COLUMBUS is a monochromatic coral print with full coverage.



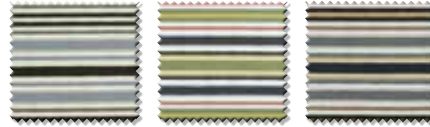
WASHINGTON is an all-over multi-colored transitional paisley.



GREENLEAF is a "hand-carved" textured floral print.



LOMBARD is a rustic stripe, seemingly hand-painted. Shown horizontally, Lombard railroadable to a vertical stripe if required.



IRONWORK is an iron gate-inspired monochromatic print.



CHARLES is a multi-colored modern "pick-up-stick" geometric.



RIVERSIDE is a colorful contemporary "marker-drawn" tossed leaf.



MADISON is an elegant large-scale "painted" damask with botanical elements.



SULLIVAN is an inspired geometric hand block print.

- 75% Cotton, 25% Linen
- 56" (142cm)
- V: 25" (64cm) - H: 27" (69cm)
- 25,000 DR
- NFPA 260/UFAC Class 1, CAL 117/SE

- Pilling Class 4-5
- alengard ® - Soil & Stain Repellent
- WS - Spot Clean
- Country of origin Pakistan
- Available in 3 Colors



ROOM SET 4
Living room

Drape & Pillows



SULLIVAN
Byzantine

Upholsteries



RELAX
Oatmeal

MELROSE is a vintage watercolor tonal damask.

alendel
interior inspiration

- 55% Linen, 45% Viscose
- 56" (142cm)
- V: 26.25" (67cm) - H: 13.5" (34cm)
- 15,000 DR
- NFPA 260/UFAC Class 1, CAL 117/SE
- Pilling Class 4-5
- alengard® - Soil & Stain Repellent
- WS - Spot Clean
- Country of origin Korea
- Available in 2 Colors



ROOM SET 5
Living room

Drape



MELROSE
Serenity

Upholsteries



HARVEST LINEN
Winter white

BEEKMAN is a “hand-painted” multi-colored floral bouquet.

- 75% Cotton, 25% Linen
- 56" (142cm)
- V: 24.75" (63 cm) Half Drop - H: 27.25" (69cm)
- 20,000 DR
- NFPA 260/UFAC Class 1, CAL 117/SE
- Pilling Class 4-5
- alengard® - Soil & Stain Repellent
- WS - Spot Clean
- Country of origin Pakistan
- Available in 3 Colors



Upholstery



BEEKMAN
Rosewater

Drape



EMPIRE VOILE
White

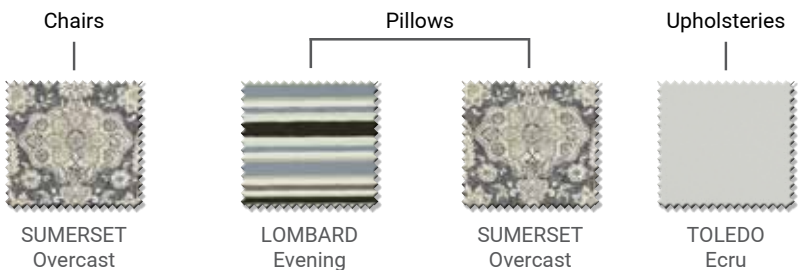
SOMERSET is an "aged" two-colored stamped damask on natural grounds.

- 100% Cotton
- 54" (137cm)
- V: 25.25" (64cm) - H: 27" (69cm)
- Pilling Class 4-5NFPA 260/UFAC Class 1, CAL 117/SE
- 50,000 DR

- WS - Spot Clean
- alengard® - Soil & Stain Repellent
- Various COO
- Available in 3 Colors



ROOM SET 7
Living room



COLUMBUS is a monochromatic coral print with full coverage.

- 100% Cotton
- 54" (137cm)
- V: 26.25" (67cm) Half Drop - H: 27" (69 cm)
- 50,000 DR
- NFPA 260/UFAC Class 1, CAL 117/SE

- Pilling Class 5
- WS - Spot Clean
- alengard® - Soil & Stain Repellent
- Various COO
- Available in 2 Colors



ROOM SET 8
Living room

Pillows



COLUMBUS
Bayou

Upholsteries



SOHO
Bone

WASHINGTON is an all-over multi-colored transitional paisley.

- 100% Cotton
- 57" (145cm)
- V: 27" (69cm) Half Drop - H: 27" (69cm)
- 30,000 DR
- NFPA 260/UFAC Class 1, CAL 117/SE

- Pilling Class 4
- WS - Spot Clean
- Country of origin China
- Available in 3 Colors



ROOM SET 9
Living room

Upholstery



WASHINGTON
Denim

GREENLEAF is a “hand-carved” textured floral print.

- 100% Cotton
- 54" (137cm)
- V: 27" (69cm) Half Drop - H: 27" (69cm)
- 50,000 DR
- NFPA 260/UFAC Class 1, CAL 117/SE
- Pilling Class 5
- WS - Spot Clean
- alengard® - Soil & Stain Repellent
- Various COO
- Available in 2 Colors



ROOM SET 10
Bedroom

Upholsteries & Pillows



GREENLEAF
Bisque

Bedding



DOLCE
Coyote

Drapes



EMPIRE VOILE
Sea life



DOLCE
Coyote

Headboard



PRIMA
Cotton

LOMBARD is a rustic stripe, seemingly hand-painted.
 Shown horizontally, Lombard railroadable to a vertical stripe if required.

- 100% Cotton
- 56" (142cm)
- V: 12.25" (31cm) - H: N/A
- 50,000 DR
- NFPA 260/UFAC Class 1 (UFAC), CAL 117/SE
- Pilling Class 5
- WS - Spot Clean
- Various COO
- Available in 3 Colors



ROOM SET 11
 Living room



IRONWORK is an iron gate-inspired monochromatic print.

- 100% Cotton
- 54" (137cm)
- V: 12.5" (32cm) - H: 9" (23cm)
- 50,000 DR
- NFPA 260/UFAC Class 1, CAL 117/SE
- Pilling Class 5
- WS - Spot Clean
- alengard ® - Soil & Stain Repellent
- Various COO
- Available in 3 Colors



ROOM SET 12
Living room

Upholstery



IRONWORK
Papaya

Drape



EMPIRE VOILE
Sea life

CHARLES is a multi-colored modern “pick-up-stick” geometric.

alendel
interior inspiration

- 100% Cotton
- 56" (142cm)
- V: 24.5" (62cm) Half Drop - H: 27" (69cm)
- 50,000 DR
- NFPA 260/UFAC Class 1, CAL 117/SE
- Pilling Class 4-5
- WS - Spot Clean
- alengard ® - Soil & Stain Repellent
- Country of origin Pakistan
- Available in 3 Colors



ROOM SET 13
Living room

Drapes & Pillows



CHARLES
Eclipse

Sofa



TOLEDO
Dusty

RIVERSIDE is a colorful contemporary "marker-drawn" tossed leaf.

- 100% Cotton
- 57" (145cm)
- V: 26.5" (67cm) Half Drop - H: 27" (69cm)
- NFPA 260/UFAC Class 1, CAL 117/SE
- 50,000 DR
- Pilling Class 5
- WS - Spot Clean
- Various COO
- Available in 2 Colors



ROOM SET 14
Living room

Upholsteries



RIVERSIDE
Sierra

Pillows



TOLEDO
Dusty

MADISON is an elegant large-scale “painted” damask with botanical elements.

- 55% Linen, 45% Viscose
- 55" (140cm)
- V: 26" (66cm) Half Drop - H: 27" (69cm)
- 15,000 DR
- NFPA 260/UFAC Class 1, CAL 117/SE
- Pilling Class 4-5
- alengard ® - Soil & Stain Repellent
- WS - Spot Clean
- Country of origin Korea
- Available in 1 Color



ROOM SET 15
Living room

Upholsteries & Pillows —



MADISON
Patina

OUTDOOR PERFORMANCE 2

On the heels of our very successful FibreGuard Indoor/Outdoor Collection, Outdoor Performance 2 is taking center stage (or should I say "Patio").

The pillars of this collection are the woven multi-colored stripes introduced in fresh, invigorating colors, breathing new energy to these classic patterns.

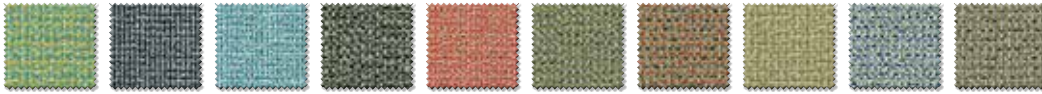
A complement of textures, weaves and colors round out the offerings. Two plain textures, Noto & Monopoli add to the versatility and the mélange of colors in pattern Genoa and the lofty basketweave houndstooth, Otrano highlight the textural aspects of the collection.

Designed to withstand the elements, these high-performance fabrics each have their unique performance properties such as fade-resistance, water-repellency, solution-dyed, mildew resistance and more. Please refer to the pattern's specifications for specific product details.

Dressing your outdoor space has never been simpler. Outdoor Performance 2 has limitless design options & color combinations. Wishing you a beautiful outdoor season!

Here are OURDOOR PERFORMANCE 2 in 9 different swatches:

GENOA, A multi-colored texture.



LERICI, A delicately woven chevron.



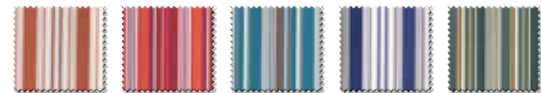
MONOPOLI, An ottoman weave solid, tonally colored.



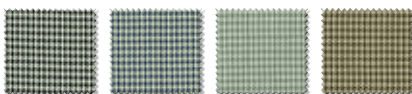
SARDINIA, A striated vertical texture.



POSITANO, Multi-colored woven stripes.



OTRANO, A basketweave two-colored houndstooth.



PALERMO, Multi-colored woven stripes.



NOTO, A plain weave solid.



TROPEA

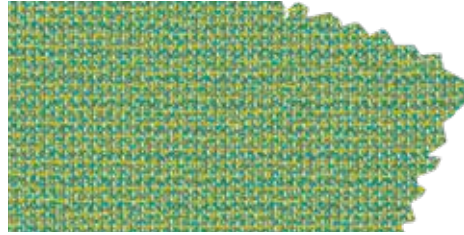


GENOA, A multi-colored texture.

alendel
interior inspiration

- 100% Solution Dyed Polypropylene
- 54" (137cm)
- 50,000 DR
- Pilling Class 5
- Fade Resistant, Bleach Cleanable
- NFPA 260/UFAC Class 1, CAL 117/SE

- 2,000 Light Hours
- Prop 65 Compliant
- Stain, Mildew & Water Repellent
- Spot Clean Only, Diluted Bleach Cleanable
- Country of origin Turkey
- Available In 10 Colors



SET 16
Outdoor

Upholsteries —



GENOA
Oat

Pillow —



GENOA
Koi

LERICI, A delicately woven chevron.

- 57% Polypropylene, 43% Polyester (Solution Dyed)
- 55" (140cm)
- V: 0.20" (0.5cm) - H: 0.20" (0.5cm)
- 50,000 DR
- Pilling Class 4-5
- Fade Resistant, Bleach Cleanable
- NFPA 260/UFAC Class 1, CAL 117/SE

- 2,000 Light Hours,
- Prop 65 Compliant
- Stain, Mildew & Water Repellent
- Spot Clean Only, Diluted Bleach Cleanable
- Country of origin Mexico
- Available In 1 Color



SET 17
Outdoor

Upholsteries —



LERICI
Dark gray & light taupe

Pillows —



NOTO
Magnolia

SARDINIA, A striated vertical texture.

- 57% Polypropylene, 43% Polyester (Solution Dyed)
- 54" (137cm)
- 50,000 DR
- Pilling Class 4-5
- Fade Resistant, Bleach Cleanable
- NFPA 260/UFAC Class 1, CAL 117/SE
- 2,000 Light Hours,
- Prop 65 Compliant
- Stain, Mildew & Water Repellent
- Spot Clean Only, Diluted Bleach Cleanable
- Country of origin Mexico
- Available In 5 Colors



SET 18
Outdoor

Upholstery —

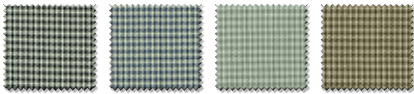


SARDINIA
Laguna

OTRANO, A basketweave two-colored houndstooth.

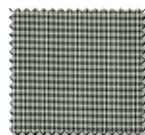
- 100% Solution Dyed Polypropylene
- 56" (142cm)
- V: 0.5" (1.3cm) - H: 0.375" (1cm)
- 25,000 DR
- Pilling Class 4-5
- Fade Resistant, Bleach Cleanable
- NFPA 260/UFAC Class 1, CAL 117/SE

- 2,000 Light Hours
- Prop 65 Compliant
- Stain, Mildew & Water Repellent
- Spot Clean Only, Diluted Bleach Cleanable
- Country of origin Turkey
- Available In 4 Colors



SET 19
Outdoor

Upholsteries —



OTRANO
Chess

NOTO, A plain weave solid.

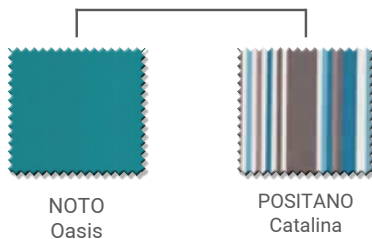
- 100% Dralon Acrylic
- 55" (140cm)
- 25,000 DR
- Pilling Class 3-4
- Oil, Soil, Stain & Water Repellent

- 500 Light Hours
- Spot Clean
- Country of origin Italy
- Available In 11 Colors
- Oeko-Tex Compliant



SET 20
Outdoor

Pillows



Upholsteries



NOTO, More outdoor ideas

Looking to update the pillows for your outdoor furniture? If so, we got it covered. From our new collection "Noto" in the patterns "Canvas" and "Bolero" makes for the most perfect outdoor pillows to match all your outdoor furniture needs.

There is no doubt you will be happy and satisfied after experiencing the magic of this fabulous collection.



SET 21
Outdoor

Pillows



NOTO
Bolero

Upholsteries



NOTO
Canvas

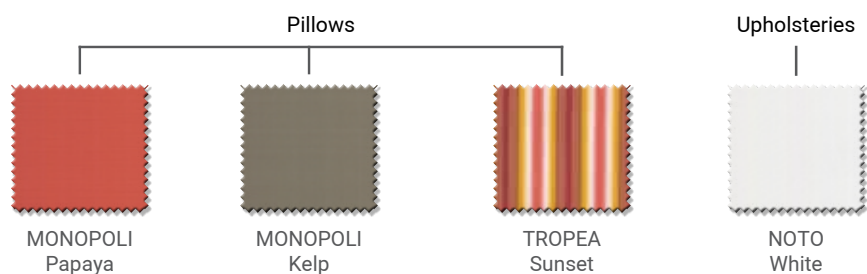
MONOPOLI, An ottoman weave solid, tonally colored.

- 100% Solution Dyed PP Olefin
- 56" (142cm)
- 25,000 DR
- Pilling Class 5
- Anti-Microbial, Bleach Cleanable, Soil, Stain & Water Repellent

- 1,200 Light Hours
- Country of origin Taiwan
- Spot Clean Only, Diluted Bleach Cleanable
- Available In 6 Colors



SET 22
Outdoor



POSITANO, Multi-colored woven stripes

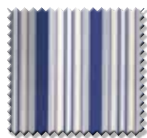
- 100% Dralon Acrylic
- 55" (140cm)
- V: Stripe - H: 7.875" (20cm)
- 25,000 DR
- Pilling Class 3-4
- Oil, Soil, Stain & Water Repellent

- 500 Light Hours
- Spot Clean
- Country of origin Italy
- Available In 5 Colors
- Oeko-Tex Compliant



SET 23
Outdoor

Pillows



POSITANO
Catalina



NOTO
Captain

Upholsteries



NOTO
Canvas

PALERMO, Multi-colored woven stripes

- 100% Dralon Acrylic
- 55" (140cm)
- V: Stripe - H: 6.125" (15.5cm)
- 25,000 DR
- Pilling Class 3-4
- 500 Light Hours

- Spot Clean
- Oil, Soil, Stain & Water Repellent
- Country of origin Italy
- Available In 3 Colors
- Oeko-Tex Compliant



SET 24
Outdoor

Pillows

Upholsteries



PALERMO
Carnival

PALERMO
Natural

PALERMO
Mojito

MONOPOLI
Papaya

MONOPOLI
Kelp

MONOPOLI
Chive

NOTO
White

TROPEA

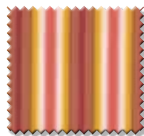
- 100% Dralon Acrylic
- 55" (140cm)
- V: Stripe - H: 9.125" (23cm)
- 25,000 DR
- Pilling Class 3-4
- 500 Light Hours

- Spot Clean
- Oil, Soil, Stain & Water Repellent
- Country of origin Italy
- Available In 1 Color
- Oeko-Tex Compliant



SET 25
Outdoor

Pillows



TROPIA
Sunset

Upholstery



NOTO
Magnolia



ALENDEL FABRICS LIMITED

Tel.: 905.669.1998 1.800.387.9968

fabrics@alendel.com

www.alendel.com